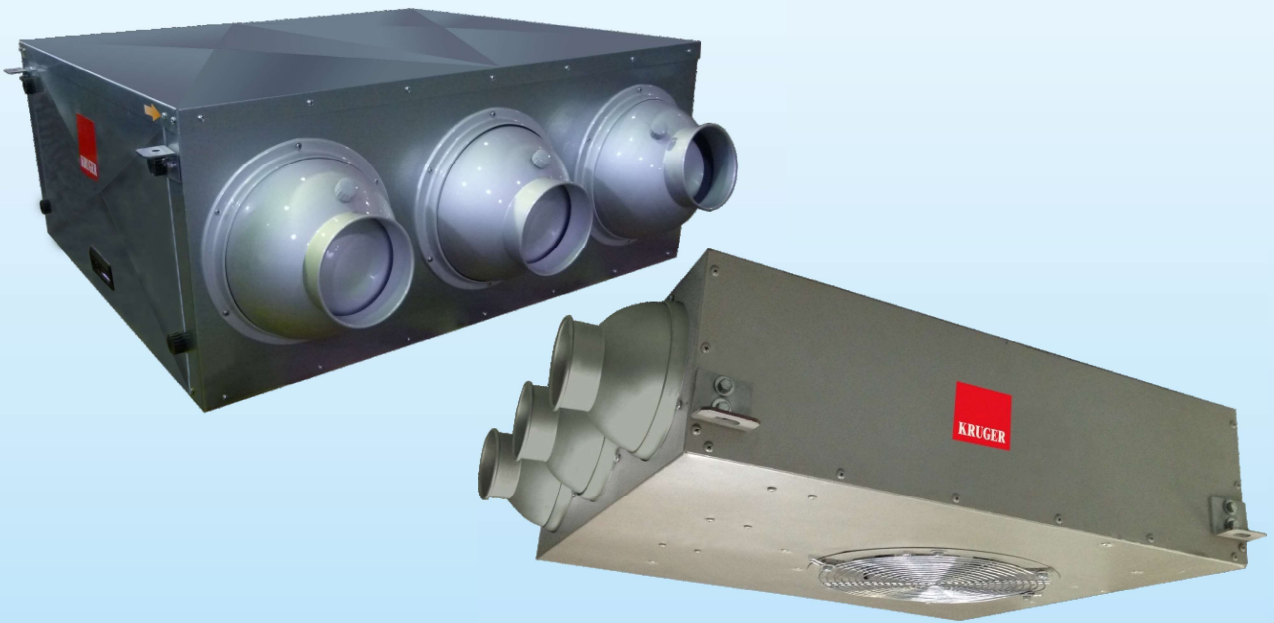




IJC Series

Induced Jet Fan

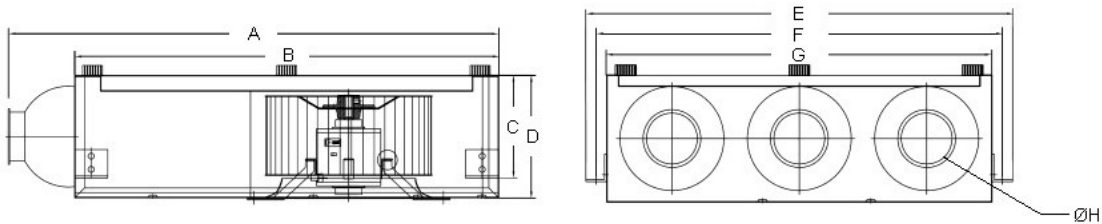


- ◆ Cabinet is manufactured in galvanised sheet steel.
- ◆ Incorporates direct driven forward curved SISW centrifugal fan or DIDW centrifugal fan.
- ◆ Aluminum nozzles can rotate 360° to provide air jet in any direction.
- ◆ Can be installed alongside beam to save head space.
- ◆ Removable access panel for easy access to fan and motor.
- ◆ All units are complete with hanger (bolted to unit).

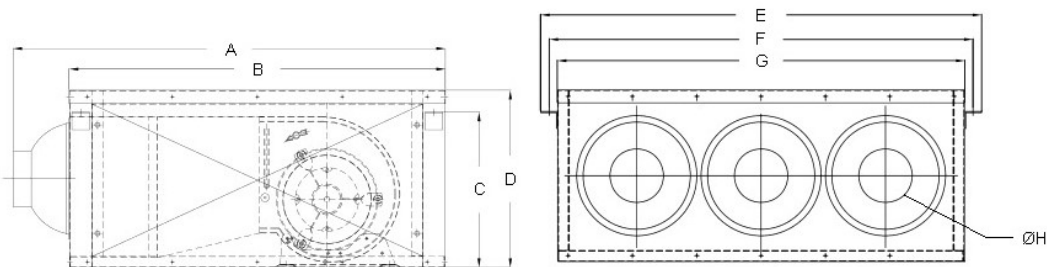
Optional Features:

- ◆ Internal Insulation
- ◆ Filter with throw-away media

Dimension



Model	A	B	C	D	E	F	G	H
IJC 225 70W 4P-1 1SK	740	640	155	185	620	590	560	74



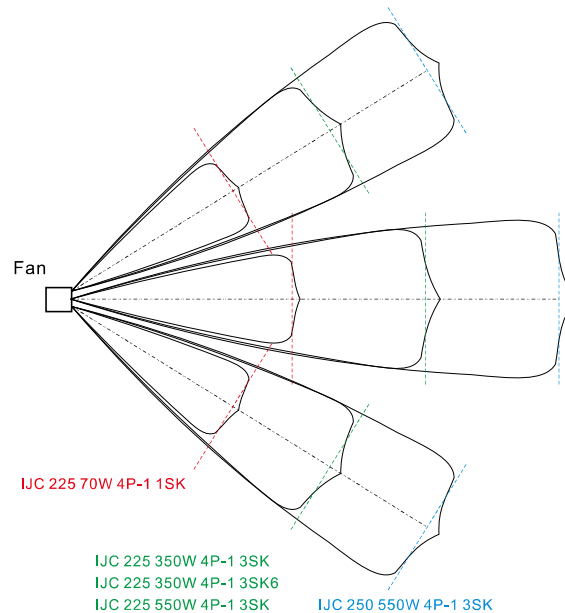
Model	A	B	C	D	E	F	G	H
IJC 225 350W 4P-1 3SK								
IJC 225 350W 4P-1 3SK6	976	850	350	400	1028	988	950	127
IJC 225 550W 4P-1 3SK								
IJC 250 550W 4P-1 3SK	1276	1150	400	500	1028	988	950	127

All dimensions in mm.

Technical Data

Model	Max.Q (m3/h)	Power (W)	Max. Amp. (A)	Motor Prot.	Ins. Class	RPM	Voltage	Phase	Hz	Nozzle Diameter (mm)	Outlet Velocity (m/s)	uF/V
IJC 225 70W 4P-1 1SK	630	70	0.9	IP20	F	1300	220-240	1	50	74	13.56	3.5/450
IJC 225 350W 4P-1 3SK	1850	350	2.6	IP21	F	1250	220-240	1	50	127	13.52	12.5/450
IJC 225 350W 4P-1 3SK6	1950	350	4.0	IP21	F	1320	220-240	1	60	127	14.25	12.5/450
IJC 225 550W 4P-1 3SK	2050	550	3.6	IP21	F	1370	220-240	1	50	127	14.98	16.0/450
IJC 250 550W 4P-1 3SK	2900	550	4.8	IP21	F	1280	220-240	1	50	127	21.20	16.0/450

Velocity Profile



Distance from Nozzle(m)		0	2	4	6	8	10	12	14	16	18	20
Center Line Velocity (m/s)*	IJC 225 70W 4P-1 1SK	13.56	5.52	1.25	0.83	0.55	0.25	-	-	-	-	-
	IJC 225 350W 4P-1 3SK	13.52	8.31	2.44	1.63	1.22	0.87	0.68	0.46	0.24	-	-
	IJC 225 350W 4P-1 3SK6	14.25	8.76	2.57	1.71	1.28	0.91	0.71	0.49	0.25	-	-
	IJC 225 550W 4P-1 3SK	14.98	9.21	2.70	1.80	1.35	0.96	0.75	0.51	0.26	-	-
	IJC 250 550W 4P-1 3SK	21.20	12.31	3.61	2.41	1.80	1.44	1.06	0.73	0.64	0.47	0.25

*Tentative data based on free air jet.