



KCE Series

CEILING MOUNT TYPE

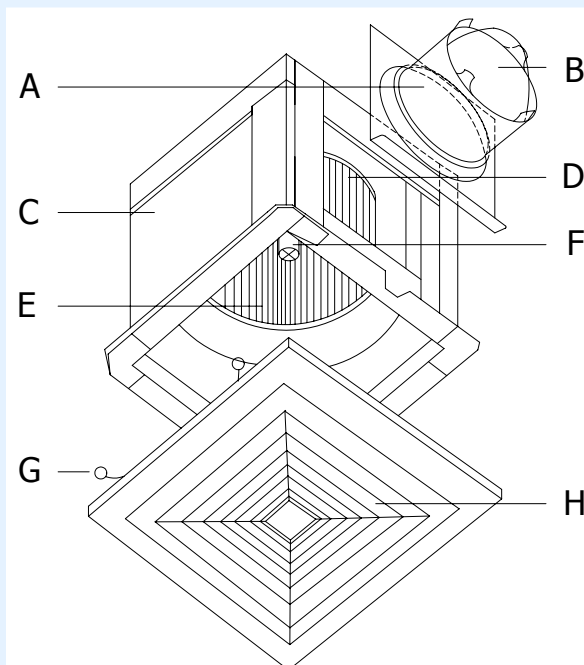


CEILING MOUNT TYPE – KCE SERIES



Features

- A. Round spigot opening for easy connection to flexible hose.
- B. Non return flap to prevent back-flow.
- C. Body made of high impact ABS plastic.
- D. Balanced turbine with new wide angle, curved blade for quiet operation and high air volume.
- E. High static pressure design for ducted air handling.
- F. Capacitor operated motor with thermal switch.
- G. Spring Clip on front cover easily removable for cleaning.
- H. Modern discreet designed cover in white.



KCE 100X/120X/160X/250X



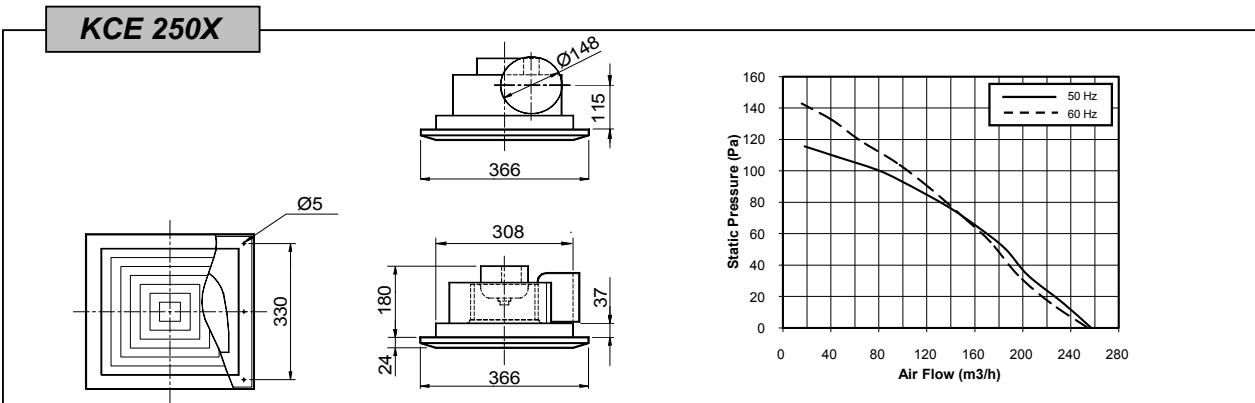
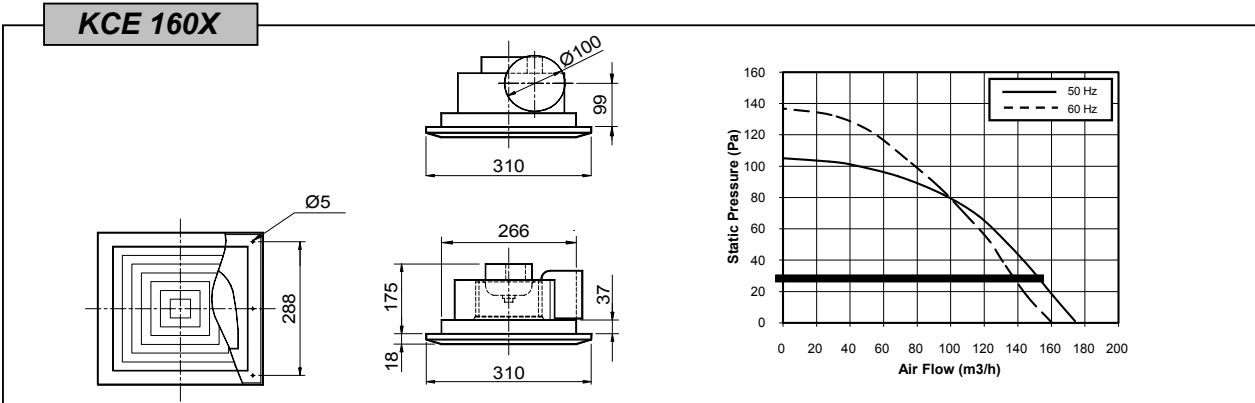
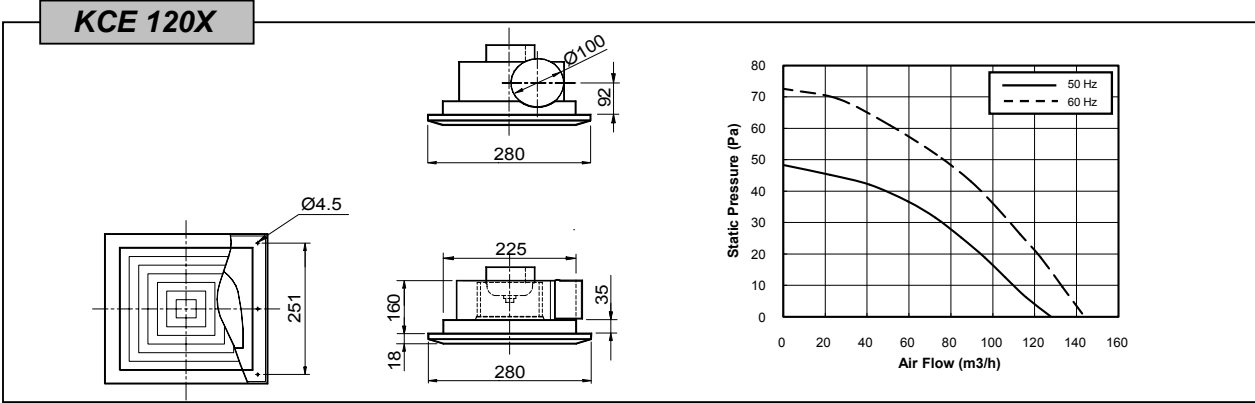
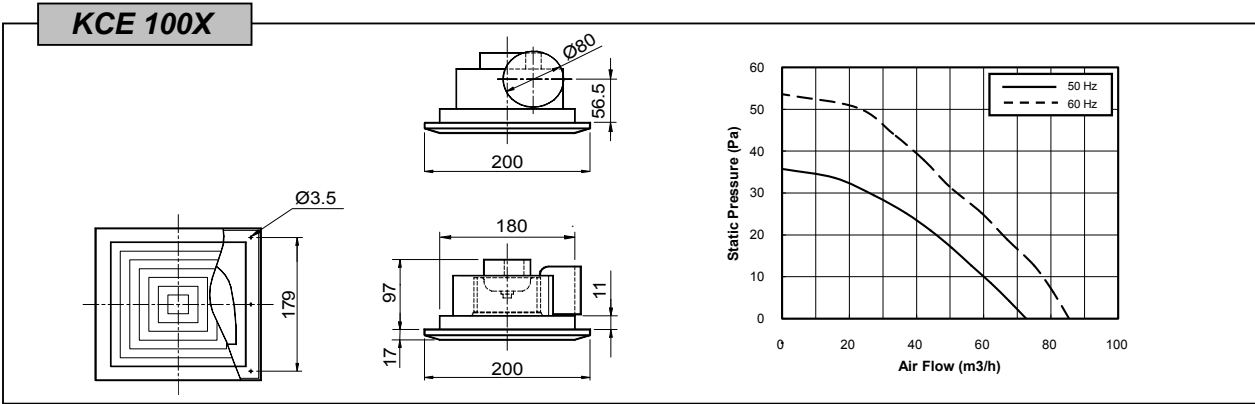
KCE 300M/400M/600M



Technical Data

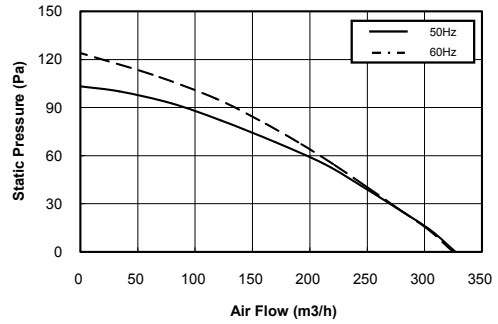
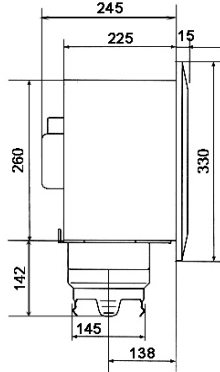
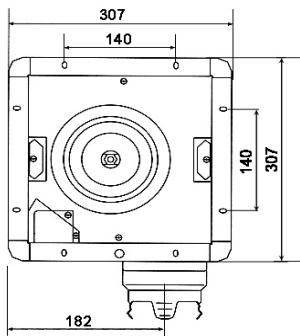
Model	Max. Flow m ³ /h	Max. Press. Pa	N° Poles	Power W	Hz	Max Amp	Class Insulation	dB (A) at 3m	RPM	Weight kg
KCE 100X	73/85	36/54	4	21/21	50/60	0.09/0.09	E	39/41	1275/1490	1.1
KCE 120X	128/143	48/73	4	25/25	50/60	0.09/0.10	E	42/44	1175/1335	1.5
KCE 160X	174/160	105/137	4	28/28	50/60	0.12/0.14	E	47/50	1045/1035	1.5
KCE 250X	257/254	116/143	4	35/35	50/60	0.15/0.16	E	42/42	890/895	2.6
KCE 300M	327/325	103/124	4	35/35	50/60	0.15/0.19	E	45/46	900/890	5
KCE 400M	445/370	163/142	4	48/48	50	0.22/0.18	E	47/50	935/830	6.5
	439/368	190/162	4	48/48	60	0.25/0.19	E	47/49	950/860	6.5
KCE 600M	585/496	211/178	4	95/95	50	0.46/0.37	E	48/47	890/865	9
	541/458	227/178	4	95/95	60	0.54/0.41	E	51/51	950/825	9

Performance

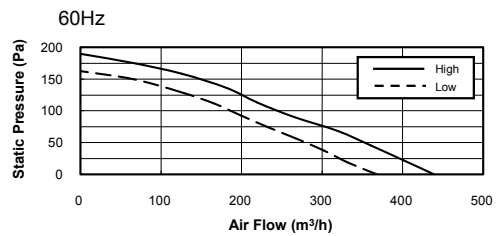
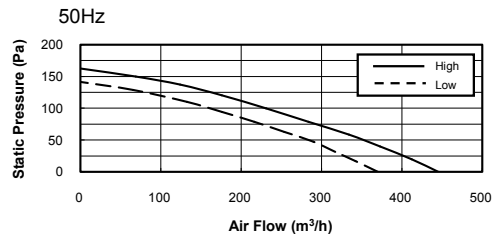
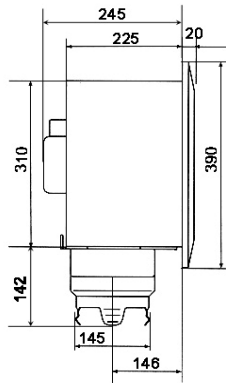
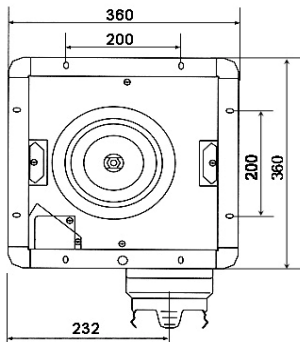


Performance

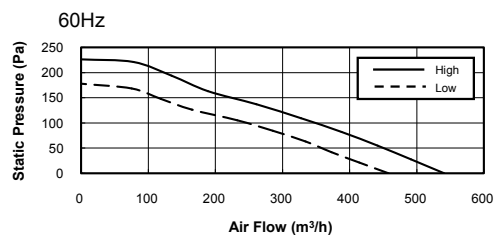
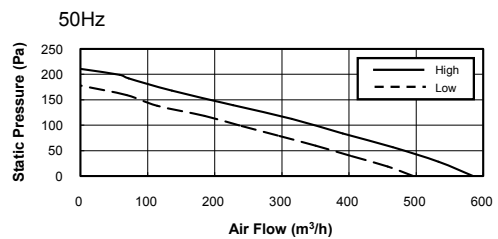
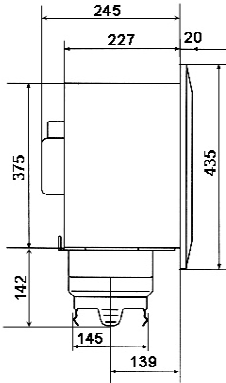
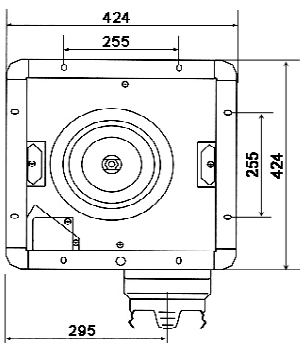
KCE 300M



KCE 400M

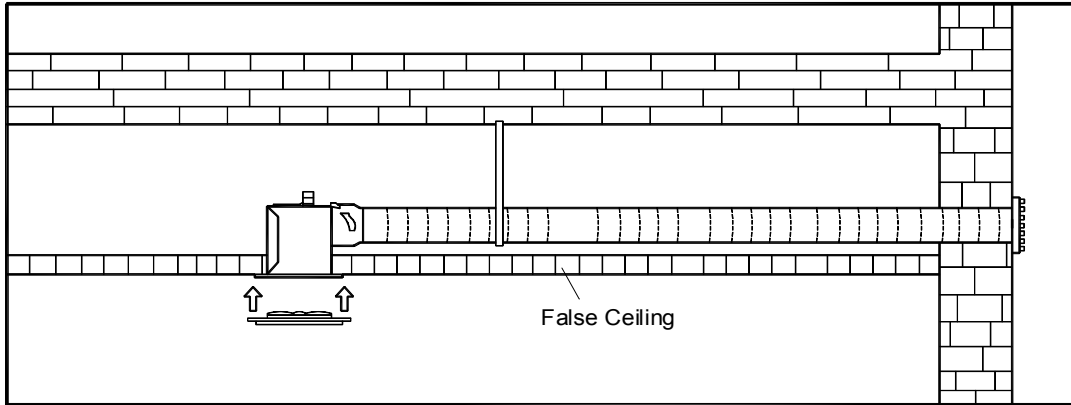


KCE 600M



Installation Guide

Option 1



Option 2

